

# HANSEN 8 OVERVIEW

## WHAT IS HANSEN 8?

Hansen 8 is the latest suite of innovative software solutions for the public sector market from Infor.

Based exclusively on Internet technology, Hansen 8 is 100% Web-browser-based, requires zero client-side software, and eliminates the issues of interfacing, plug-ins, message brokers, and adaptors that have typically plagued complex enterprise government systems.

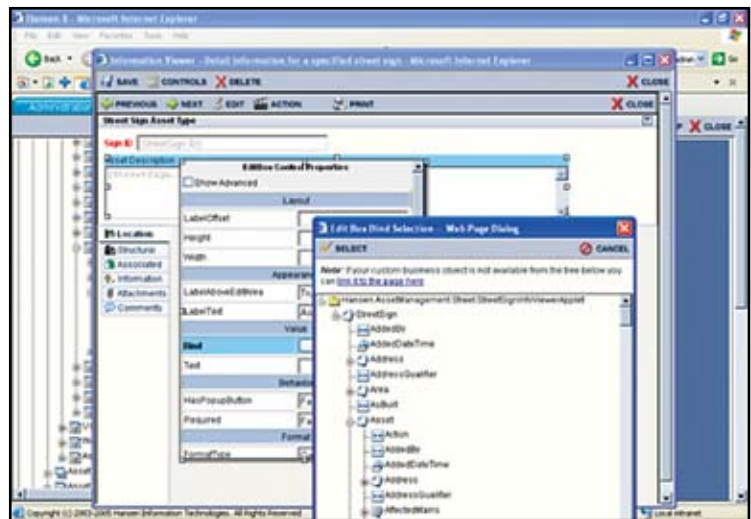
## Why Choose Hansen 8?

Hansen 8 makes your agency more effective and more efficient. Because Hansen 8 is 100% Web-browser-based, it's easy to customise, easy to deploy, and easy to learn. Hansen 8 accurately manages your information and delivers exactly what you need, when you need it.

Bottom line: Hansen 8 saves you money by reducing your need for additional applications.

## FEATURES AND BENEFITS OF HANSEN 8

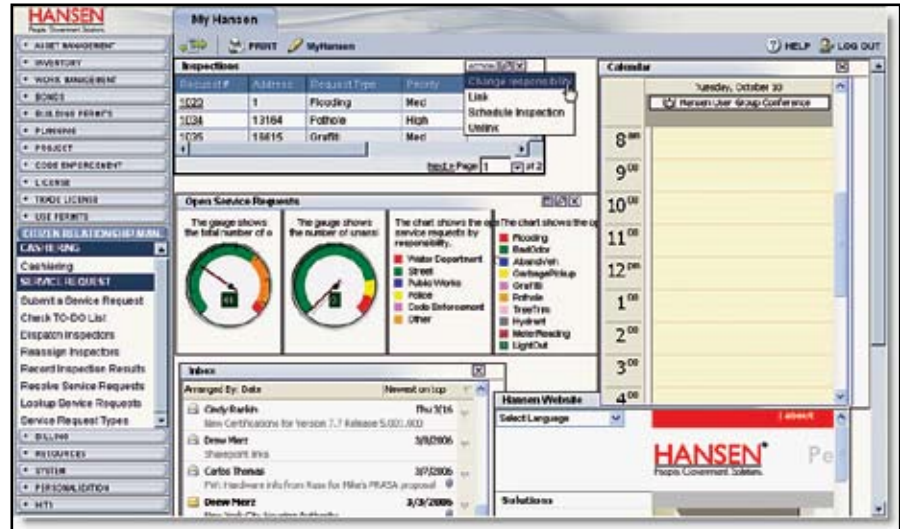
- **Workflow Orientation:** Hansen 8 was designed from the ground up to be completely workflow oriented. While providing the power of robust query and decision support functionality, Hansen 8 works the way your organisation works by guiding you through common business processes within the software.
- **Intuitive User Interface:** Many current Web applications are really just a linear series of Web pages. Although this works well for shopping, it isn't suitable for managing workflow. Hansen 8 is dynamic and intuitive—you'll find the information you need exactly where you need it.
- **Personalisation:** Every aspect of Hansen 8 is designed so that functions can be modified to reflect an employee's day-to-day workflow. Your most commonly-used tools will be right at your fingertips.
- **Easy to Access and Deploy:** Due to its server-based architecture, Hansen 8 is easy to deploy and access. Simply enter a Web address in a standard Web browser and you're up and running—no local workstation installation is required.
- **Integration Capabilities:** Using XML Web Services, data mining, and dynamic page content, Hansen 8 functions as a complete business productivity environment. Hansen 8 provides an open application programming interface which allows its functionality to be accessed from other products, and every aspect of Hansen 8 is accessible as a .NET object or as a published Web service.



Hansen 8's Web-based, workflow-oriented design is fully customizable, intuitive, and easy to teach to managers and implementers.

## KEY COMPONENTS OF HANSEN 8

- **MyHansen:** The MyHansen workspace is the key to Hansen 8 personalisation. In MyHansen, you'll have easy access to internal tools, external applications such as Microsoft Outlook modules (Inbox, Calendar, etc.), and Hansen Dashboards—graphical displays of Key Performance Indicators (KPIs). MyHansen can also display real-time third-party content such as up-to-the-minute weather forecasts.
- **Map Drawer:** Map Drawer is designed to leverage your agency's spatial data to improve process efficiency and help users make more informed decisions within the Hansen 8 workflow. Map Drawer is an applet that can be launched at logical places within Hansen 8, and it includes many standard commands and queries right out of the box. Map Drawer will interact with your agency's Shapefiles and Geo-databases, and it uses ESRI's ArcIMS® technology to generate map images.



Hansen 8's Web-based, workflow-oriented design is fully customizable, intuitive, and easy to teach to managers and implementers.

## TECHNICAL PHILOSOPHY

Hansen 8 has been developed from the ground up as an n-tier distributed application using Microsoft .NET technology. Hansen 8 is native to this emerging platform and is not a client/server application with an Internet wrapper. It comes fully equipped with an easy to use Web Services API and subsequent method documentation. This allows developers and systems integrators to support the exchange of data between different applications using W3C (World Wide Web Consortium) standards. Hansen has also adopted several Internet standards in the development of Hansen 8, including Web Services, SOAP (Simple Object Access Protocol) and XML (Extensible Markup Language).

## How Do I Learn More?

To learn more about Hansen 8, please call (61 3) 8608-8500 or email, david.chandler@infor.com.

## ABOUT INFOR

Infor delivers business-specific software to enterprising organisations. With experience built in, Infor's solutions enable businesses of all sizes to be more enterprising and adapt to the rapid changes of a global marketplace. With more than 70,000 customers, Infor is changing what businesses expect from an enterprise software provider. For additional information, visit [www.infor.com](http://www.infor.com).



Level 8, 1 Southbank Boulevard  
Southbank, VIC 3006  
61 3 8608 8500

Copyright © 2007 Infor Global Solutions GmbH and/or its affiliates and subsidiaries. All rights reserved. The word and design marks set forth herein are trademarks and/or registered trademarks of Infor Global Solutions GmbH and/or its affiliates and subsidiaries. All other trademarks listed herein are the property of their respective owners.  
INFPD\_HEOVGEENUS\_0507-1